

CERTIFIED LAND CORNER RECORDATION

DESCRIPTION OF CORNER EVIDENCE FOUND, AND ORIGINAL RECORD (If known)

¼ corner 8/9 T.14 N., R.66 W., 6th P.M., Laramie County, Wyoming

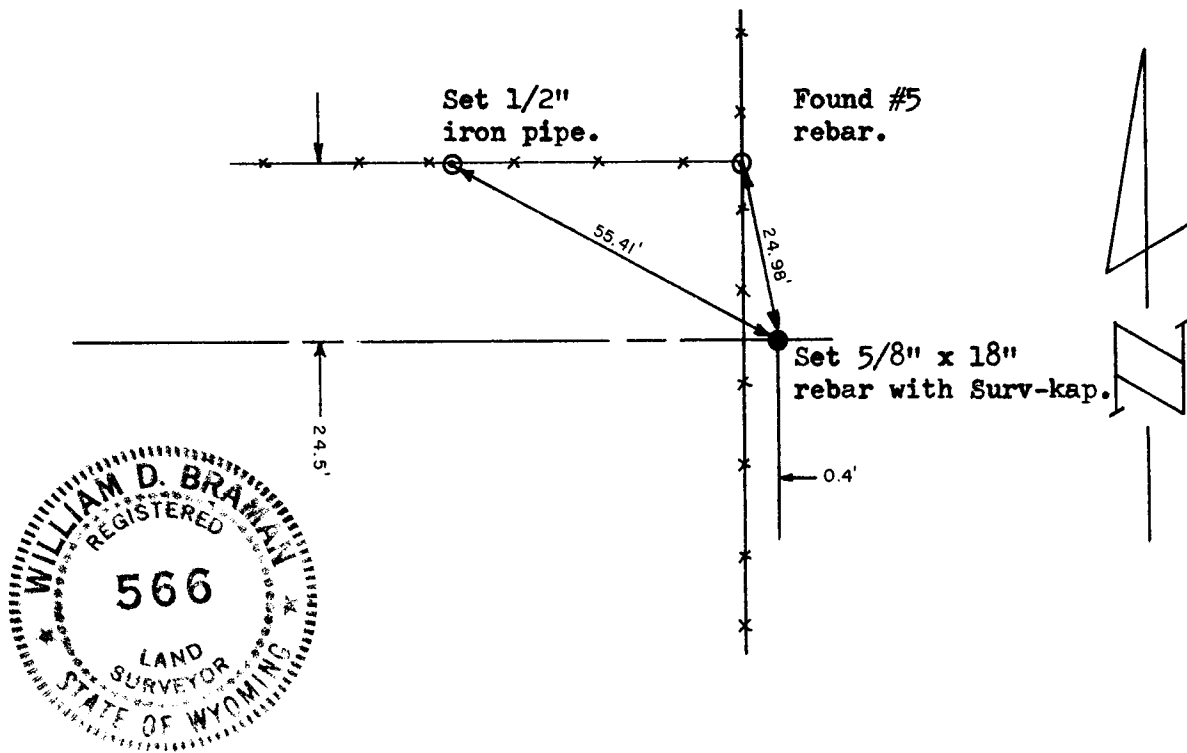
Nothing found at corner; set corner by single proportion from NE corner Section 8, and SE corner Section 8.

DESCRIPTION OF MONUMENT AND ACCESSORIES ESTABLISHED TO PERPETUATE THE ORIGINAL LOCATION OF THIS CORNER:

Set 5/8" x 18" rebar with surv-kap with mound of stone alongside corner.

References: found #5 febar and set 1/2" pipe (see sketch for distances.)

SKETCH, WITH COURSE AND DISTANCE TO ADJACENT CORNER IF DETERMINED IN THIS SURVEY.
(May Sketch or Paste Reproduction on Reverse Side.)



I, William D. Braman certify that I have carefully performed or reviewed the work done on the diagrammed corner as reported on this recordation form and approve the same.

William D. Braman
Signature of Surveyor

LS 566
Registration No.

STATE OF WYOMING,
Office of Clerk and Recorder,
County of Laramie

This "corner record" was filed for record on the 18 day of Feb., 1977, was noted on the cross-index plat and is assigned page No. _____, in book No. _____.

Janet C. Wiltchord
County Official

Cross Index No. _____	T. _____	R. _____	Mer. _____
<u>G 9</u>	T. <u>14</u>	R. <u>66</u>	Mer. _____
_____	T. _____	R. _____	Mer. _____
_____	T. _____	R. _____	Mer. _____
_____	T. _____	R. _____	Mer. _____
_____	T. _____	R. _____	Mer. _____
_____	T. _____	R. _____	Mer. _____